



Dry pit toilet and tippy tap in Zion, GP

July 2015

*Charles Bunia, member of
Bubulu Sanitation Committee
and excellent plumber*



COMMUNITY LED TOTAL SANITATION: LESSONS LEARNT AFTER 5 MONTHS



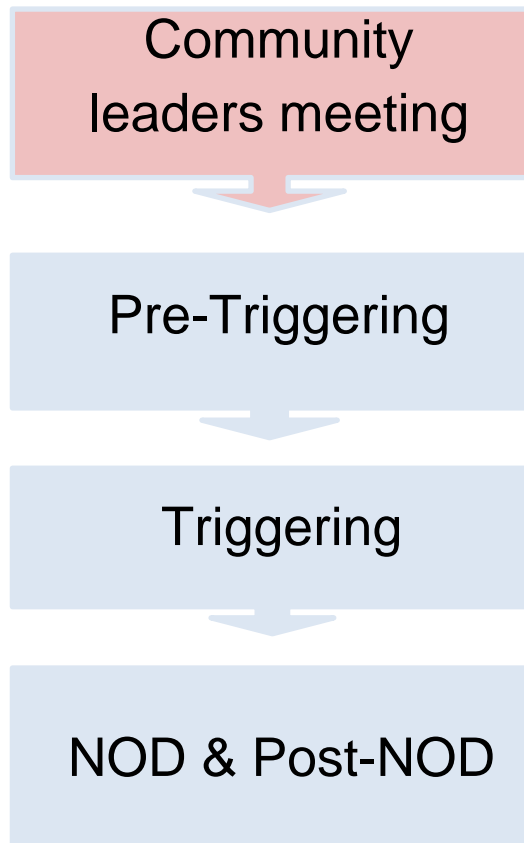
INTRODUCTION



- Where were we? Where are we now?
- Thanks to:
 - RWASH: Tom Nanau, Isabel Ross, Marcel Gapu, Piter Visser for their continuous support and advice
 - UNICEF: Erick Hale for his charismatic triggering
 - WASH partners sharing their experience and active participation to ToT
 - Alexandra Höhne and Pip Crooks for their leadership
 - Red Cross staff and volunteers for the enthusiasm and dedication
- Today share and give back



CLTS PROCESS



- Standard CLTS approach based on RWASH guidelines
- Little addition from Red Cross experience in Cambodia: getting the leaders onboard even before the Pre-Triggering



COMMUNITY LEADER MEETING AND PRETRIGGERING

- Community leader meeting
 - get the leaders on board
 - During triggering they become accomplices
 - introduces a competition between communities
- Word “shit” is powerful for change
- Introduce the “no subsidy” approach at this stage and **insist**
- Leaders need to be triggered first



TRIGGERING

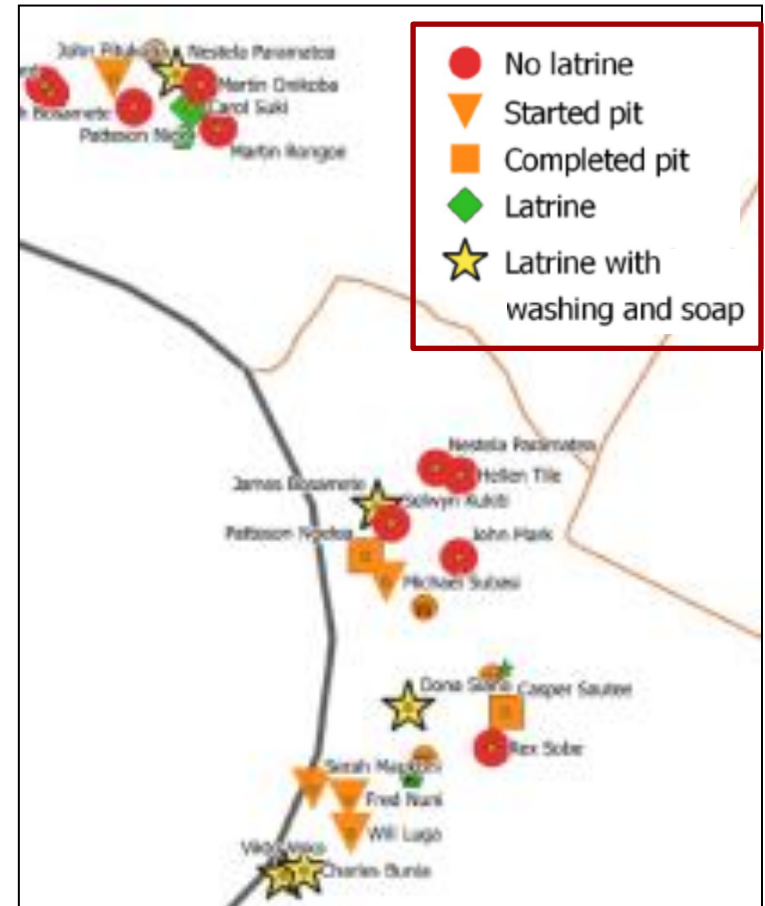
- 1 week of training is barely enough to make facilitator confident and efficient
- Facilitator needs to believe in it and **practise**
- Hard to break the traditional teaching to participative way
- Latrine design session
 - Lots of questions
 - Developed brochure for inspiration and create demand



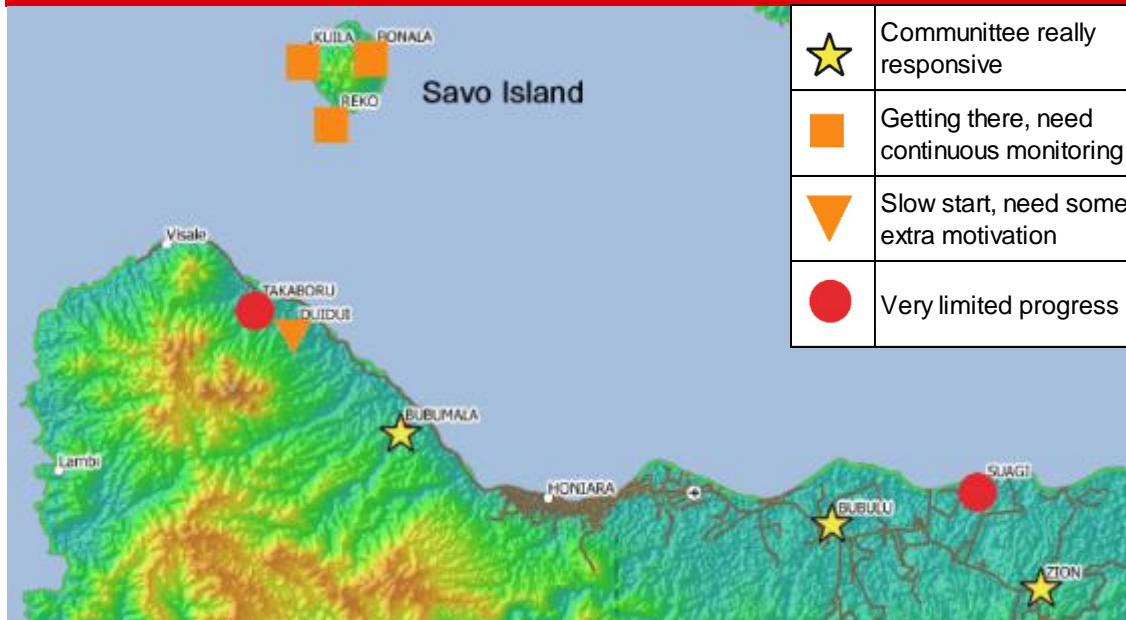
Flies going from shit to the plate of rice and tayo

MONITORING

- Weekly
- Sanitation committees need to have the lead
- Map
 - Increases peer pressure and pride
 - From computer maps to hand drawn with stickers: more fun and gives ownership to Committee



PROGRESS AFTER 5 MONTHS



- Coexistence of no subsidy for sanitation and subsidised water infrastructure
- Official visits boost motivation of communities

■ Various factors for different pace and motivation:

- + strong ground
- + smaller communities
- Communities used to receiving subsidies
- Less monitoring

■ Timing:

- Fastest HH NOD: 10 days in Reko
- BUT for a CLTS project not: less than 1 year

WHAT IS NEXT? (APPART FROM NOD CELEBRATIONS)



■ RANAS approach to behaviour changes :

Developed by Ewag, measure the factors that differentiate Doers (those who built WC) and Non Doers to know which lever to use

■ Feel free to reuse:

- Latrine design guide
 - CLTS facilitator guide
- Requesting them at

wash-rehab-si.frc@croix-rouge.fr

